

Livin' on the **EDGE**

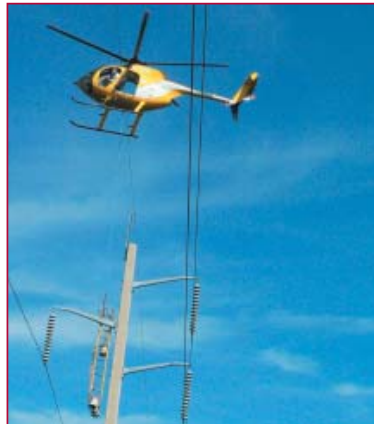
It is no secret that utility line work is a dangerous, risky and exciting business. Add an energized transmission line, 65 foot poles located in a water crossing and a helicopter maneuvering inches from the conductor, and it appears to be something you might see on an episode of Fear Factor. However, for Winco Powerline Services, it is just another day at the office. The specialized transmission crew recently began work on the LCEC system to replace equipment that was discovered to be potentially faulty during routine maintenance inspections. Winco will complete maintenance projects on the transmission lines throughout the LCEC system just in time for the approach of storm season.



by Karen Ryan



The project at the Matlacha water crossing entailed replacement of bells on 25 poles as well as a cross-arm replacement.



The Winco helicopter crew strategically transports maintenance equipment from one pole to the other.



The transmission crew waits at the top of the pole to be transferred to the next pole. This gives them a minute of rest, but how relaxing is it at 65 feet in the air?



The crew rides to the next pole on the landing skid of the helicopter traveling at 40 miles per hour.



Once the crew reaches the next pole, they are dropped off to start replacements of the bells on each davit arm.



The potentially faulty bells are removed and the equipment is prepared for the addition of the new bells.



Once in proper position, the bells are secured and the crew is ready to move to the next set of bells or the next structure.



The new bells are moved into position and ready for installation.